



**Great Meadow Road,
Bradley Stoke, BS32 8DG**

PRICE: £194,000

Property Features

- One Bedroom
- Back to Back Style
- Gas central Heating
- Off Street Parking
- No Onward Chain
- Cul De Sac
- Double Glazing
- Close to Local Amenities



Full Description

Great Meadow Road, Bradley Stoke, is a delightful property offers a perfect blend of comfort and convenience. With a well-designed layout, this home features a welcoming reception room that provides an ideal space for relaxation or entertaining guests.

The property boasts a cosy bedroom, perfect for restful nights and peaceful mornings. Built in 1994, it combines modern living with a touch of character, making it an appealing choice for first-time buyers or those looking to invest.

Bradley Stoke is known for its friendly community atmosphere and excellent local amenities, including shops, parks, and schools, all within easy reach. This location offers a wonderful balance of suburban tranquillity and accessibility to nearby urban centres.

Hallway

Double glazed UPVC door to entrance hall, with tiled floor and door two living area.

Living Room

15'7" x 10'7" (4.76 x 3.25)

Double glazed window to front and side, radiator and stairs rising to 1st floor landing and door to.

Kitchen

9'2" x 7'4" (2.8 x 2.24)

Double glazed window to front a range of wall and base units with worktop over, stainless steel sink with drainer, space for washing machine, space for cooker, tiled splashback. Wall mounted combination boiler, under stairs storage cupboard and radiator.

Landing

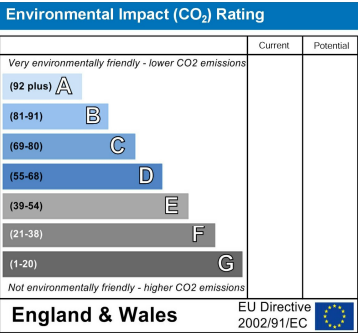
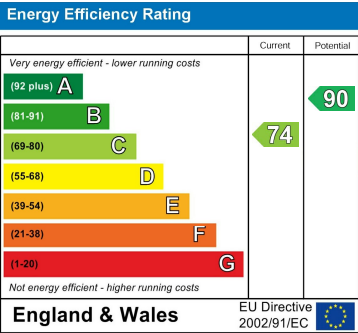
Access to loft and doors to.



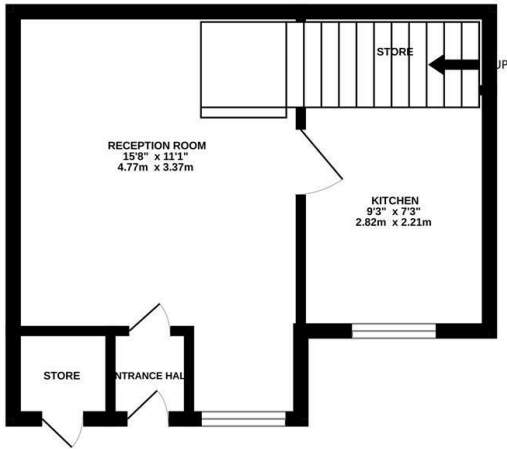
Bedroom
Double glazed window to front, radiator, three wardrobes with hanging and shelving.

Bathroom
Double glazed obscure window to front, suite comprising of a low-level WC, pedestal hand wash basin, panelled bath with mixer tap and Mira sport electric shower over. Shaver point and fully tiled walls. Radiator.

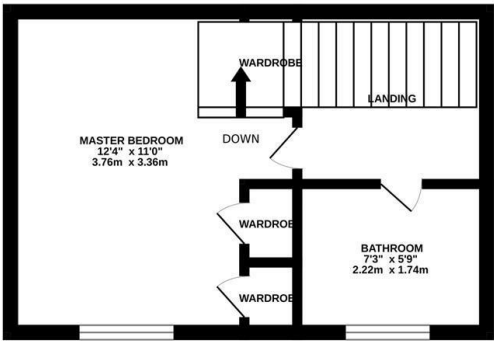
Property is freehold with a managment fee of £356.00 per year.



GROUND FLOOR



1ST FLOOR



Measurements are approximate. Not to scale. Illustrative purposes only
Made with Metropix ©2025